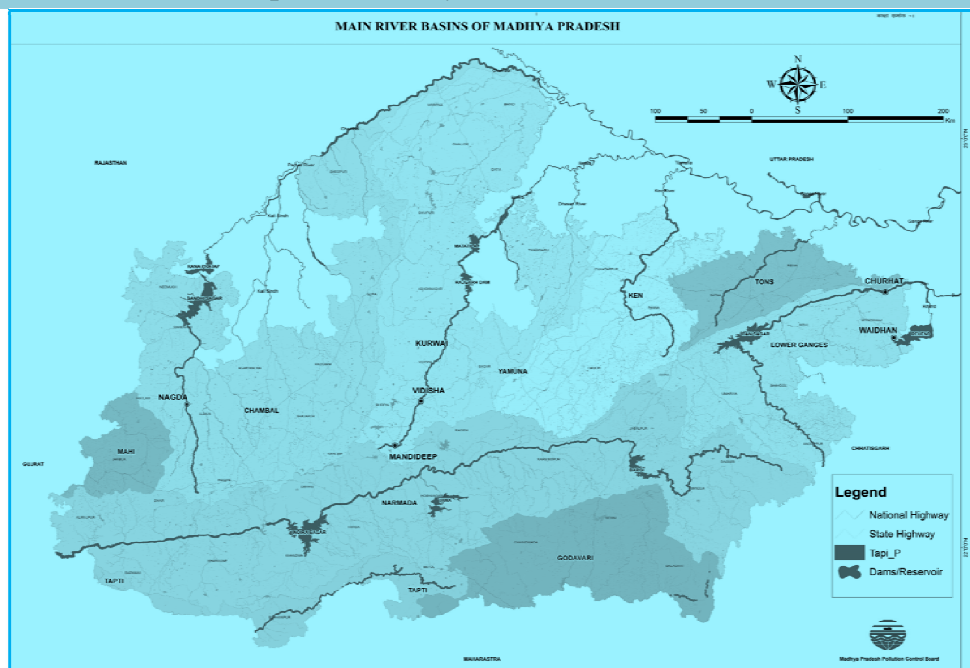


The M.P. Pollution Control Board has started the Water Quality Index (WQI) by using the under mentioned calculator  
Which have been provided by Central Pollution Control Board.



The M.P. Pollution Control Board has started the **Water Quality Index (WQI)** by using the under mentioned calculator  
Which have been provided by Central Pollution Control Board.

River Water Quality Status April 2018			As per C.P.C.B. Calculator				As per Sur Standar	
S. N o.	River	Name of Monitoring Station	DO	BOD	FC	TC	Water Quality	Class
		Water Quality Criteria	>4.0 mg/l	<3.0 mg/l	<2500 MPN /100ml	<5000 MPN /100ml		B
								A - 2mg/l
								B - 3mg/l
								C - 4mg/l
1.	Anas	Anas River, Road Bridge Jhabua	7.2	1.2	1.8	40	SATISFACTORY	A
2.	Betwa	River Betwa at Nayapura Down Stream Mandideep Industrial Area-1, Mandideep	Dry	Dry	Dry	Dry	Dry	Dry
3.		River Betwa near road bridge, Bhojpur	Dry	Dry	Dry	Dry	Dry	Dry
4.		River Betwa near Water Supply intake well point, Raisen	7.0	1.8	2	220	SATISFACTORY	B
5.		River Betwa near Water Supply intake point, Vidisha	6.4	1.8	2	230	SATISFACTORY	A
6.		River Betwa near Charantirathghat, Vidisha	6.5	3.0	230	1600	NOT SATISFACTORY	C
7.		River Betwa D/ Stream after mixing of river Bais , Vidisha	6.4	2.6	230	1600	SATISFACTORY	B

8.		River Betwa at U/s at Mahuta Ghat, Agasod	7.58	1.12	0	4	SATISFACTORY	A
9.		River Betwa at M/s J.P. Thermal Power, Bina	7.52	1.16	0	6	SATISFACTORY	A
10.		River Betwa at U/s near road bridge, Orchha, Tikamgarh	7.1	1.2	0	3	SATISFACTORY	A
11.	<b>Bicchiya</b>	RiverBicchiya at Rewa	6.3	2.0	9	70	SATISFACTORY	A
12.	<b>Basili</b>	Gohad Dam at Basili River Gohad Bhind	7.2	1.7	4	70	SATISFACTORY	A
13.	<b>Banjar</b>	River Banjar at Malanjkhanda, Balaghat , WS Intake Point	7.5	1.4	1.8	21	SATISFACTORY	B
14.	<b>Bihar</b>	River Bihar at Rewa	6.6	1.8	4	33	SATISFACTORY	A
15.	<b>Chillar</b>	River Chillar at Shajapur	6.9	2.4	58	540	SATISFACTORY	B
16.	<b>Choupan</b>	<b>Choupan</b> River U/S VIJAYPUR GUNA	7.2	1.6	1.8	22	SATISFACTORY	A
17.		<b>Choupan</b> River D/S VIJAYPUR GUNA	7	2.4	4	27	SATISFACTORY	B
18.	<b>Chambal</b>	Chambal At Janapav Origine Point	Dry	Dry	Dry	Dry	Dry	Dry
19.		River Chambal U/S Nagda	6.7	2.8	24	220	SATISFACTORY	B
20.		River Chambal at 1 km d/s nagda	Nil	42	1600	1600	NOT SATISFACTORY	E
21.		River Chambal at Tal	Dry	Dry	Dry	Dry	Dry	Dry
22.		River Chambal at Gandhisagar	7.2	2.0	17	40	SATISFACTORY	A
23.		Chambal River, Dholpur	7.8	1.0	2	22	SATISFACTORY	A
24.	<b>Chota Tawa</b>	River Chota Tawa at Harsood	Dry	Dry	Dry	Dry	Dry	Dry
25.	<b>Choral</b>	Choral at Choral Dam	6.6	1.8	1.8	50	SATISFACTORY	A
26.	<b>Chamla</b>	River Chamla at Badnagar	7.3	2.8	150	58	SATISFACTORY	B
27.	<b>Denwa</b>	River Denwa, near Sarni Road Bridge, Sarni	Dry	Dry	Dry	Dry	Dry	Dry
28.	<b>Gour</b>	Gour River near Bhongadwar, WSS Intake Point	7.8	1.8	11	40	SATISFACTORY	A
29.	<b>Gopad</b>	River Gopad at nigari intech point	7.9	1.5	0	12	SATISFACTORY	A
30.	<b>Hiran</b>	River Hiran near N.H. 12 road bridge, Village Vikrampur, Distt. Narsingpur	7.2	1.8	1.8	70	SATISFACTORY	A
31.		River Hiran near N.H. 7 road bridge, Hihora, Distt. Jabalpur	7.2	1.5	1.8	40	SATISFACTORY	A
32.	<b>Jammar</b>	River Jammar at Dholawad	7.82	2.0	14	390	SATISFACTORY	A
33.	<b>Johilla</b>	River Johilla at Narozeabad,Near Pali road. Bridge. Umariya	7.6	1.5	2	32	SATISFACTORY	A
34.	<b>Jamuni</b>	River Jamuni at Bari ghat U/s near intake point, Tikamgarh	7.64	1.24	0	6	SATISFACTORY	A
35.	<b>Kariyari</b>	River Kariyari,(D/S) ,Rewa	Dry	Dry	Dry	Dry	Dry	Dry
36.		River Kariyari,(U/S)at Rewa	Dry	Dry	Dry	Dry	Dry	Dry
37.	<b>Katni</b>	Katni River KATNI	5.9	1.6	63	220	SATISFACTORY	A
38.	<b>Kanhan</b>	Kanhan at Chindwara before mixing Boregaon Growth Centre Nalla.	7.2	2.6	3.0	15.0	SATISFACTORY	B
39.	<b>Khan</b>	Khan at Sanwer	5.2	10	240	>1600	NOT SATISFACTORY	E
40.		River Khan at KabitKhedi	0	28	350	>1600	NOT SATISFACTORY	E
41.		River Khan at Shakkar Khedi	0	22	240	>1600	NOT SATISFACTORY	E
42.	<b>Kshipra</b>	River Kshipra at Gaughat	6.5	4.0	210	920	NOT SATISFACTORY	E
43.		River Kshipra at Siddhwat ,Ujjain	7.5	3.0	210	920	NOT SATISFACTORY	C
44.		River Kshipra at Ramghat,Ujjain	6.8	9.0	540	≥1600	NOT SATISFACTORY	D
45.		River Kshipra at 1 k.m. d/s Triveni ,Ujjain	7.5	3.0	210	920	NOT SATISFACTORY	C
46.		River Kshipra at Mahidpur	Dry	Dry	Dry	Dry	Dry	Dry
47.		River Kshipra atKshipra Dewas	7	2.2	32	90	SATISFACTORY	B
48.	<b>Kailsoat</b>	River Kailsoat near road bridge, Mandideep	Dry	Dry	Dry	Dry	Dry	Dry
49.	<b>Kali Sindh</b>	Kali Sindh River SARANGPUR RAJGARH	Dry	Dry	Dry	Dry	Dry	Dry
50.	<b>Kunda</b>	Kunda at Khargone	6.8	1.2	1.8	50	SATISFACTORY	A
51.	<b>Mandakini</b>	Mandakini at Ramghat at Chitrakoot, Satna	6.9	3.0	-	980	NOT SATISFACTORY	C
52.	<b>Maleni</b>	River Maleni at Jaora	8.2	2.8	80	120	SATISFACTORY	B
53.	<b>Mahi</b>	River Mahi at Ranisingh	7.6	3.0	17	94	NOT SATISFACTORY	C
54.		Mahi at Badnawar	6.5	1.8	1.1	3.6	SATISFACTORY	A
55.	<b>Newaj</b>	River Newaj at Shujalpur	7.2	2.8	94	920	SATISFACTORY	B

56.		River Newaj U/S RAJGARH	7.8	1.5	1.8	22	SATISFACTORY	A
57.	<b>Narmada</b>	River Narmada at Amarkantak,From origin,Distt. Anuppur	7	1.1	<1.8	3.6	SATISFACTORY	A
58.		River Narmada at Kapildhara Distt.Anuppur (M.P.)	7.4	2.0	3.6	47	SATISFACTORY	A
59.		River Narmada at Dindori,U/s intake point, Distt.Dindori	7.9	1.6	3.6	41	SATISFACTORY	A
60.		River Narmada at Mandla near Shamsanghat	8	1.2	1.8	41	SATISFACTORY	A
61.		River Narmada at Mandla near road bridge	7.6	1.6	10	39	SATISFACTORY	A
62.		River Narmada at Lalpur, Jabalpur	7.7	0.9	1.8	40	SATISFACTORY	A
63.		River Narmada at Tilwaraghat, Jabalpur	7.5	1.4	4.0	48	SATISFACTORY	A
64.		River Narmada at Panchwatighat, Jabalpur before mixing Bawangana river	6.7	1.8	1.8	38	SATISFACTORY	A
65.		River Narmada at Sarashwatighat, Jabalpur after mixing Bawangana river	7.2	1.6	1.8	28	SATISFACTORY	A
66.		River Narmada at Barmanghat, Narsingpur	8.0	1.8	1.8	39	SATISFACTORY	A
67.		River Narmada Up Stream near Shahganj Guest House	7.5	1.4	<2	22	SATISFACTORY	A
68.		River Narmada near Korighat, Hosangabad	7.1	1.2	<2	38	SATISFACTORY	A
69.		River Narmada 50 m.Down Stream near Sethani Ghat	8.2	1.4	2	47	SATISFACTORY	A
70.		River Narmada 100m D/S after confluence of SPM nallah	8.7	2.4	<2	35	SATISFACTORY	A
71.		River Narmada at Nemawar	7.2	1.8	22	48	SATISFACTORY	A
72.		Narmada near Punasa Dam	7.2	1.6	2.0	40	SATISFACTORY	A
73.		Narmada At Omkareshwar	6.9	1.8	2.0	50	SATISFACTORY	A
74.		Narmada At Mortakka Bridge	6.7	1.5	2.0	50	SATISFACTORY	A
75.		Narmada at Maheshwar	6.8	1.0	1.8	40	SATISFACTORY	A
76.		River Narmada at Dharamपुरi	6.5	0.8	2.0	50	SATISFACTORY	A
77.		Narmada At Barwani	6.0	1.2	2.0	50	SATISFACTORY	A
78.		Narmada at Mandleshwar	7.6	1.2	1.8	46	SATISFACTORY	A
79.	<b>Parwati</b>	Parwati River U/S PILUKHEDI RAJGARH	Dry	Dry	Dry	Dry	Dry	Dry
80.		Parwati River D/S PILUKHEDI RAJGARH	Dry	Dry	Dry	Dry	Dry	Dry
81.		Parwati River NEEMKHEDI GUNA	7.4	2.0	1.8	21	SATISFACTORY	A
82.		Parwati River DHARNAWDA GUNA	7.4	2.3	1.8	26	SATISFACTORY	B
83.	<b>Pench</b>	<b>Pench</b> River near SINGORI road. Bridge at Chhindwara	7.2	2.8	3.0	11.0	SATISFACTORY	B
84.	<b>Simrar</b>	Simrar River KATNI	6.3	1.7	12	40	SATISFACTORY	A
85.	<b>Sone</b>	River Sone at Amarkantak from origin point,Distt Anuppur	6.6	0.6	ND	1.8	SATISFACTORY	A
86.		Sone at Bhaturaghat Apprx. 500mtrs.D/s of OPM Distt.Shahdol.(M.P.)	6.6	1.9	3.6	46	SATISFACTORY	A
87.		River Sone at Jarwahi Near road bridge	7.7	1.4	1.8	38	SATISFACTORY	A
88.		River Sone at Bansagar,near Rewa road. Bridge Shahdol	7	1.4	2	27	SATISFACTORY	A
89.		River Sone at Chachai ,near ATPS pumping station,Distt.Anuppur.(M.P.)	7.6	1.2	3.6	40	SATISFACTORY	A
90.		River Sone at Amlai ,near OPM pumping station,Distt.Shahdol.(M.P.)	7.7	1.7	2	39	SATISFACTORY	A
91.		Sone river near road bridge Vill. Chitwal Singrouli.	7.7	1.4	0	12	SATISFACTORY	A
92.		River Sone at Bhavarsen,near Rd.Bridge after confluence of banas River,Distt.Sidhi	7.6	1.5	4	21	SATISFACTORY	A
93.		Bansagar canal water sample,near Baghwar Tol Plaza ,Sidhi	7.7	0.9	2	24	SATISFACTORY	A
94.		River Sone at Churhat,Distt.Sidhi	7.8	1.4	2	26	SATISFACTORY	A
95.	<b>Shivna</b>	River Shivna at Ramghat Mandsaur	7.3	2.8	84	280	SATISFACTORY	C
96.	<b>Sindh</b>	Sindh River, Near Road Bridge Dabra, Gwalior	7.4	1.4	2	40	SATISFACTORY	A
97.	<b>Sank</b>	Sank River at Tighra Reservoir Noorabad Road Brij Morena	7.3	1.6	2	23	SATISFACTORY	A
98.	<b>Tones</b>	Tones at Madhavgarh, Near PHED w/s intake point Satna	6.2	2.6	-	220	SATISFACTORY	B
99.		Tones at Madhavgarh, Bardhiaghat	6.8	1.4	-	110	SATISFACTORY	A
100.		River Tons at Basaman Mama temple , Near Purwa fall,Semariya,Distt.Rewa	6.3	1.8	4	40	SATISFACTORY	A
101.		River Tons at Chakghat,Distt.Rewa	6.6	1.6	6	40	SATISFACTORY	A
102.	<b>Tapti</b>	River Tapti near Amarawati, Road Bridge at Village Kheda	Dry	Dry	Dry	Dry	Dry	Dry

103.		Tapti at Nepanagar 100 M. D/S	7	1.6	1.8	50	SATISFACTORY	A
104.		Tapti at Nepanagar Navtha Pumping Station	6.7	1.4	1.8	47	SATISFACTORY	A
105.		Tapti at Hathnoor	4.3	2.9	1.8	900	SATISFACTORY	B
106.		Tapti at Pipalghat Burhanpur	6.5	2.9	1.8	500	SATISFACTORY	B
107.	Wainganga	River Wainganga at Chhapara, Seoni near WSS Intake Point	7.4	1.4	1.8	31	SATISFACTORY	A
108.		River Wainganga at Chhapara, Seoni near road bridge after mixing Moti & Chamaria Nala	7.4	1.6	1.8	27	SATISFACTORY	A
109.		River wainganga at Balaghat 100 metre D/S Jagpurghat	7.6	1.1	1.8	21	SATISFACTORY	A